

## \$449,998 - 192 Savoy Crescent, Sherwood Park

MLS® #E4421873

**\$449,998**

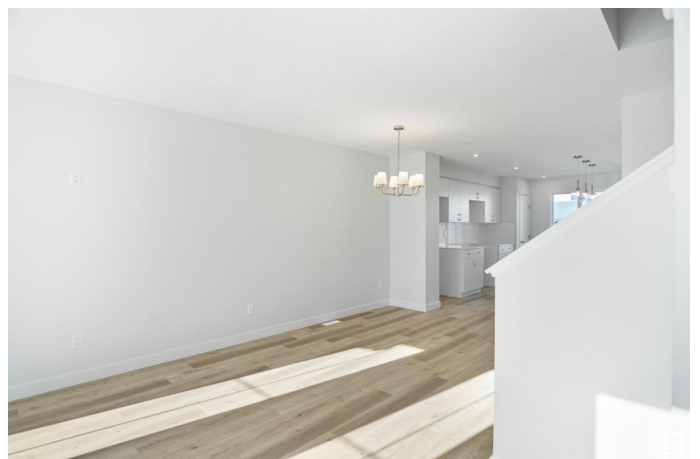
3 Bedroom, 2.50 Bathroom, 1,357 sqft

Single Family on 0.00 Acres

Summerwood, Sherwood Park, AB

**NO CONDO FEES and AMAZING VALUE!**

You read that right welcome to this brand new townhouse unit the "Saratoga" Built by the award winning builder Pacesetter homes and is located in one of Sherwood Parks premier communities of Summerwood. The Saratoga is a spacious end unit townhome with a layout that maximizes space. Its 1,360+ square feet includes three bedrooms, two-and-a-half bathrooms, upper floor laundry, and a convenient mudroom. The L-shaped kitchen offers plenty of cabinet storage space and a large island with eating bar. The nook and great room are open concept and spacious. Upstairs, the laundry room is large with space to move around, and conveniently located near all three bedrooms. The owner's suite offers full ensuite bathroom and large walk-in closet. The Saratoga model includes a double car garage and full front and back landscaping. \*\*\* Photos are from the same style home recently built, finishing's and colors will vary home is under construction and will be complete by September 2025\*\*\*



Built in 2025

### Essential Information

MLS® # E4421873

Price \$449,998

|                |                      |
|----------------|----------------------|
| Bedrooms       | 3                    |
| Bathrooms      | 2.50                 |
| Full Baths     | 2                    |
| Half Baths     | 1                    |
| Square Footage | 1,357                |
| Acres          | 0.00                 |
| Year Built     | 2025                 |
| Type           | Single Family        |
| Sub-Type       | Residential Attached |
| Style          | 2 Storey             |
| Status         | Active               |

### Community Information

|             |                    |
|-------------|--------------------|
| Address     | 192 Savoy Crescent |
| Area        | Sherwood Park      |
| Subdivision | Summerwood         |
| City        | Sherwood Park      |
| County      | ALBERTA            |
| Province    | AB                 |
| Postal Code | T8H 2Y3            |

### Amenities

|           |                        |
|-----------|------------------------|
| Amenities | See Remarks            |
| Parking   | Double Garage Detached |

### Interior

|                   |  |
|-------------------|--|
| Interior Features | ensuite bathroom                           |
| Appliances        | Garage Control, Garage Opener, See Remarks |
| Heating           | Forced Air-1, Natural Gas                  |
| Stories           | 2  |
| Has Basement      | Yes  |
| Basement          | Full, Unfinished                           |

### Exterior

|                   |  |
|-------------------|--|
| Exterior          | Wood, Stone, Vinyl   |
| Exterior Features | Golf Nearby, Landscaped, Park/Reserve, Playground Nearby, Public Swimming Pool, Public Transportation, Schools, Shopping Nearby, See Remarks |
| Roof              | Asphalt Shingles   |

|              |                    |
|--------------|--------------------|
| Construction | Wood, Stone, Vinyl |
| Foundation   | Concrete Perimeter |

**Additional Information**

|                |                     |
|----------------|---------------------|
| Date Listed    | February 16th, 2025 |
| Days on Market | 116                 |
| Zoning         | Zone 25             |

DATA IS DEEMED RELIABLE BUT IS NOT GUARANTEED ACCURATE BY THE REALTORS® ASSOCIATION OF EDMONTON. COPYRIGHT 2025 BY THE REALTORS® ASSOCIATION OF EDMONTON. ALL RIGHTS RESERVED.Trademarks are owned or controlled by the Canadian Real Estate Association (CREA) and identify real estate professionals who are members of CREA (REALTOR®, REALTORS®) and/or the quality of services they provide (MLS®, Multiple Listing Service®)

Listing information last updated on June 12th, 2025 at 3:33pm MDT