

\$324,900 - 8751 152 Street, Edmonton

MLS® #E4432430

\$324,900

3 Bedroom, 2.00 Bathroom, 1,029 sqft
Single Family on 0.00 Acres

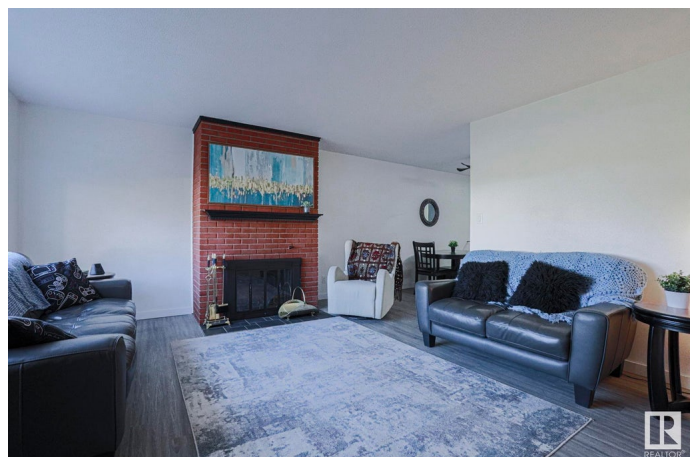
Jasper Park, Edmonton, AB

MAJOR RENOVATIONS! This 1050 sq.ft, 3 bedroom and 2 full bathroom half duplex has had some major renovations and looks fantastic! This property is **BRIGHT, CLEAN, WELL KEPT, AND INVITING.** Upstairs features living room with **WOOD BURNING FIREPLACE**, **GORGEOUS** kitchen with quartz counters, reverse osmosis water filtration system, 4pc bathroom, **HUGE PRIMARY BEDROOM**, and another large second bedroom. New vinyl plank flooring, fully renovated kitchen and bathroom, **SHINGLES** in 2023, HWT in 2024. The basement has 1 more bedroom, 3 piece bathroom, large rec room and **MASSIVE** storage/laundry room. Outside has a lovely little yard with deck and storage shed. This home also comes with **TONS** of parking, including a covered car port. **LOCATION** cannot be beat, across the street is a **PARK, COMMUNITY LEAGUE AND 2 SCHOOLS!** Also close to restaurants (Bon Ton Bakery is a short walk away!) amenities, shopping, and public transit.

Built in 1970

Essential Information

MLS® #	E4432430
Price	\$324,900
Bedrooms	3



Bathrooms	2.00
Full Baths	2
Square Footage	1,029
Acres	0.00
Year Built	1970
Type	Single Family
Sub-Type	Half Duplex
Style	Bungalow
Status	Active

Community Information

Address	8751 152 Street
Area	Edmonton
Subdivision	Jasper Park
City	Edmonton
County	ALBERTA
Province	AB
Postal Code	T5R 1L9

Amenities

Amenities	Deck
Parking	Rear Drive Access, Single Carport

Interior

Appliances	Air Cleaner-Electronic, Dishwasher-Built-In, Dryer, Microwave Hood Fan, Refrigerator, Stove-Electric, Washer
Heating	Forced Air-1, Natural Gas
Stories	2
Has Basement	Yes
Basement	Full, Finished

Exterior

Exterior	Wood, Vinyl
Exterior Features	Back Lane, Landscaped, Playground Nearby, Public Transportation, Schools
Roof	Asphalt Shingles
Construction	Wood, Vinyl
Foundation	Concrete Perimeter

Additional Information

Date Listed April 24th, 2025

Days on Market 23

Zoning Zone 22

DATA IS DEEMED RELIABLE BUT IS NOT GUARANTEED ACCURATE BY THE REALTORS® ASSOCIATION OF EDMONTON. COPYRIGHT 2025 BY THE REALTORS® ASSOCIATION OF EDMONTON. ALL RIGHTS RESERVED. Trademarks are owned or controlled by the Canadian Real Estate Association (CREA) and identify real estate professionals who are members of CREA (REALTOR®, REALTORS®) and/or the quality of services they provide (MLS®, Multiple Listing Service®)

Listing information last updated on May 17th, 2025 at 4:17pm MDT