

Courtesy Of Nick Hale Of Schmidt Realty Group Inc

# **\$148,000 - 408 3425 19 Street, Edmonton**

MLS® #E4433409

**\$148,000**

1 Bedroom, 1.00 Bathroom, 638 sqft

Condo / Townhouse on 0.00 Acres

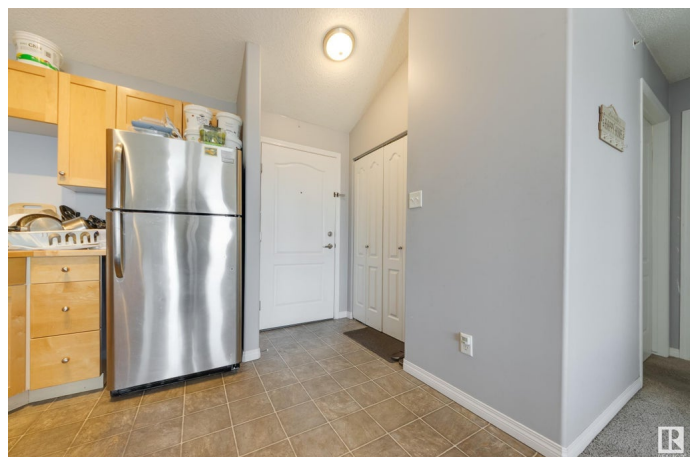
Wild Rose, Edmonton, AB

Welcome to Wild Rose! This fantastic TOP FLOOR unit has vaulted ceilings and unobstructed views. The kitchen is open to the living space, features wood style cabinets, and stainless appliances! The living room gets lots of natural light and has access to your west facing balcony - perfect for enjoying the sunsets above the rooftops. Continuing on you've got a large bedroom, a full bathroom with IN-SUITE LAUNDRY, and a spacious storage closet right in the unit. The prime location is close to several restaurants, green space, walking paths, transit, the Meadows Recreation Center, and more! This unit also comes with an energized TITLED PARKING STALL and has easy access to the Whitemud and Henday. This building is equipped with a guest suite, social room, and it has low condo fees! All of this value at an incredible price point makes this condo the perfect opportunity for first time buyers and investors alike. Come take a look!

Built in 2005

## **Essential Information**

MLS® #	E4433409
Price	\$148,000
Bedrooms	1
Bathrooms	1.00



Full Baths	1
Square Footage	638
Acres	0.00
Year Built	2005
Type	Condo / Townhouse
Sub-Type	Lowrise Apartment
Style	Single Level Apartment
Status	Active

### Community Information

Address	408 3425 19 Street
Area	Edmonton
Subdivision	Wild Rose
City	Edmonton
County	ALBERTA
Province	AB
Postal Code	T6T 2B5

### Amenities

Amenities	Social Rooms, Storage-In-Suite, Vaulted Ceiling
Parking Spaces	1
Parking	Stall

### Interior

Appliances	Dishwasher-Built-In, Fan-Ceiling, Hood Fan, Oven-Microwave, Refrigerator, Stacked Washer/Dryer, Stove-Electric
Heating	Hot Water, Natural Gas
# of Stories	4
Stories	4
Has Basement	Yes
Basement	None, No Basement

### Exterior

Exterior	Wood, Stone, Vinyl
Exterior Features	Public Transportation, Schools, Shopping Nearby
Roof	Asphalt Shingles
Construction	Wood, Stone, Vinyl
Foundation	Concrete Perimeter

### Additional Information

Date Listed	April 30th, 2025
Days on Market	21
Zoning	Zone 30
Condo Fee	\$354

DATA IS DEEMED RELIABLE BUT IS NOT GUARANTEED ACCURATE BY THE REALTORS® ASSOCIATION OF EDMONTON. COPYRIGHT 2025 BY THE REALTORS® ASSOCIATION OF EDMONTON. ALL RIGHTS RESERVED. Trademarks are owned or controlled by the Canadian Real Estate Association (CREA) and identify real estate professionals who are members of CREA (REALTOR®, REALTORS®) and/or the quality of services they provide (MLS®, Multiple Listing Service®)

Listing information last updated on May 21st, 2025 at 6:02pm MDT