

## \$599,900 - 6034 105 Street, Edmonton

MLS® #E4433974

**\$599,900**

5 Bedroom, 4.00 Bathroom, 952 sqft

Single Family on 0.00 Acres

Pleasantview (Edmonton), Edmonton, AB

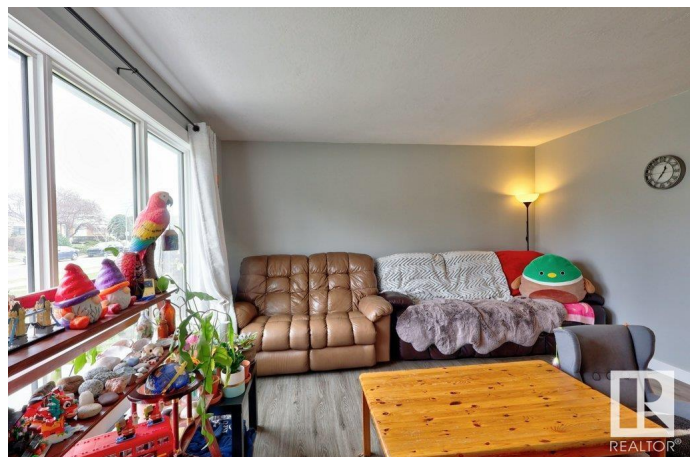
Be amazed by this fully renovated bungalow with a legal basement suite, located in a neighborhood undergoing exciting renewal! Every inch of this home has been thoughtfully designed with high-end finishes including quartz countertops, full-height cabinets, stainless steel appliances, and vinyl plank flooring. Major upgrades include a brand new double garage, new roof, two new furnaces, and two new hot water tanks. Enjoy total privacy with separate entrances, laundry, utility rooms, and outdoor spaces for each unit. The main floor offers 3 spacious bedrooms and 2 full baths, including a beautiful ensuite. The basement suite is equally impressive with 2 large bedrooms, 2 full baths (one ensuite), its own laundry, and a full kitchen. This is no ordinary basement suite—it's a stylish, comfortable space that feels like a home. Whether you're looking to live up, down, or both, this is an incredible opportunity in a community that is being rehabilitated by the city. Visit this REALTORS website for more info.

Built in 1963

### Essential Information

MLS® # E4433974

Price \$599,900



Bedrooms	5
Bathrooms	4.00
Full Baths	4
Square Footage	952
Acres	0.00
Year Built	1963
Type	Single Family
Sub-Type	Detached Single Family
Style	Bungalow
Status	Active

### Community Information

Address	6034 105 Street
Area	Edmonton
Subdivision	Pleasantview (Edmonton)
City	Edmonton
County	ALBERTA
Province	AB
Postal Code	T6H 2N4

### Amenities

Amenities	Deck
Parking	Double Garage Detached

### Interior

Interior Features	ensuite bathroom
Appliances	Garage Opener, Hood Fan, Microwave Hood Fan, Storage Shed, Window Coverings, Dryer-Two, Refrigerators-Two, Washers-Two
Heating	Forced Air-2, Natural Gas
Stories	2
Has Suite	Yes
Has Basement	Yes
Basement	Full, Finished

### Exterior

Exterior	Wood, Stone, Stucco
Exterior Features	Fenced, Landscaped
Roof	Asphalt Shingles
Construction	Wood, Stone, Stucco

Foundation                      Concrete Perimeter

**Additional Information**

Date Listed                      May 2nd, 2025

Days on Market                7

Zoning                            Zone 15

DATA IS DEEMED RELIABLE BUT IS NOT GUARANTEED ACCURATE BY THE REALTORS® ASSOCIATION OF EDMONTON. COPYRIGHT 2025 BY THE REALTORS® ASSOCIATION OF EDMONTON. ALL RIGHTS RESERVED.Trademarks are owned or controlled by the Canadian Real Estate Association (CREA) and identify real estate professionals who are members of CREA (REALTOR®, REALTORS®) and/or the quality of services they provide (MLS®, Multiple Listing Service®)

Listing information last updated on May 8th, 2025 at 10:47pm MDT