

## \$429,998 - 1392 Watt Drive, Edmonton

MLS® #E4434058

**\$429,998**

4 Bedroom, 3.50 Bathroom, 1,424 sqft

Single Family on 0.00 Acres

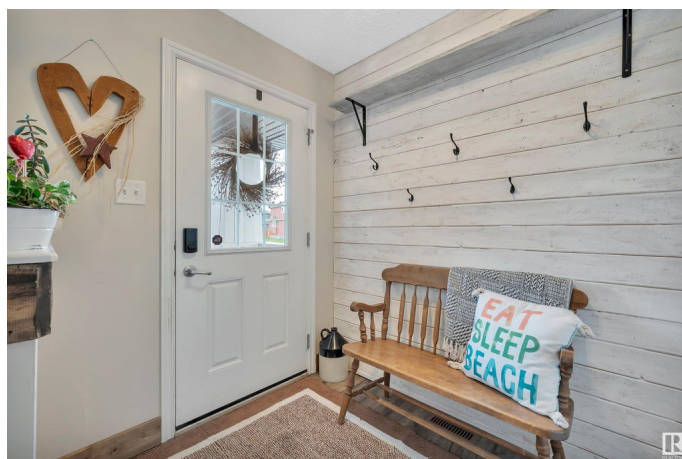
Walker, Edmonton, AB

Welcome to this charming and inviting home in the heart of Walker. This 1,424 sq ft two-storey offers 4 bedrooms and 3.5 bathrooms with a bright, open-concept layout. The main floor features a sunlit living room that flows into the dining area and kitchen, which is equipped with stainless steel appliances and plenty of cabinet space. A convenient 2-piece bathroom completes this level. Upstairs, the spacious primary bedroom includes a 4-piece ensuite and walk-in closet. Two additional bedrooms and another full bathroom round out the upper floor. The fully finished basement offers even more flexibility, with a large rec room, a fourth bedroom, and an additional full bathroom—perfect for guests, a home office, or extra living space. Outside, enjoy a south-facing backyard ideal for summer evenings. Back access leads to a detached garage. All of this in a prime location close to schools, shopping, trails, playgrounds, and everyday essentials.

Built in 2015

### Essential Information

MLS® #	E4434058
Price	\$429,998
Bedrooms	4
Bathrooms	3.50



Full Baths	3
Half Baths	1
Square Footage	1,424
Acres	0.00
Year Built	2015
Type	Single Family
Sub-Type	Residential Attached
Style	2 Storey
Status	Active

### Community Information

Address	1392 Watt Drive
Area	Edmonton
Subdivision	Walker
City	Edmonton
County	ALBERTA
Province	AB
Postal Code	T6X 2A6

### Amenities

Amenities	Deck, See Remarks
Parking	Double Garage Detached

### Interior

Interior Features	ensuite bathroom
Appliances	Dishwasher-Built-In, Dryer, Garage Control, Garage Opener, Microwave Hood Fan, Refrigerator, Stove-Electric, Washer, Window Coverings
Heating	Forced Air-1, Natural Gas
Stories	3
Has Basement	Yes
Basement	Full, Finished

### Exterior

Exterior	Wood, Vinyl
Exterior Features	Corner Lot, Fenced, Golf Nearby, Landscaped, Playground Nearby, Public Transportation, Schools, Shopping Nearby
Roof	Asphalt Shingles
Construction	Wood, Vinyl
Foundation	Concrete Perimeter

**Additional Information**

Date Listed            May 2nd, 2025  
Days on Market       7  
Zoning                 Zone 53

DATA IS DEEMED RELIABLE BUT IS NOT GUARANTEED ACCURATE BY THE REALTORS® ASSOCIATION OF EDMONTON. COPYRIGHT 2025 BY THE REALTORS® ASSOCIATION OF EDMONTON. ALL RIGHTS RESERVED.Trademarks are owned or controlled by the Canadian Real Estate Association (CREA) and identify real estate professionals who are members of CREA (REALTOR®, REALTORS®) and/or the quality of services they provide (MLS®, Multiple Listing Service®)  
Listing information last updated on May 9th, 2025 at 10:02am MDT