

\$799,000 - 19 Mission Avenue, St. Albert

MLS® #E4435315

\$799,000

5 Bedroom, 3.50 Bathroom, 2,725 sqft

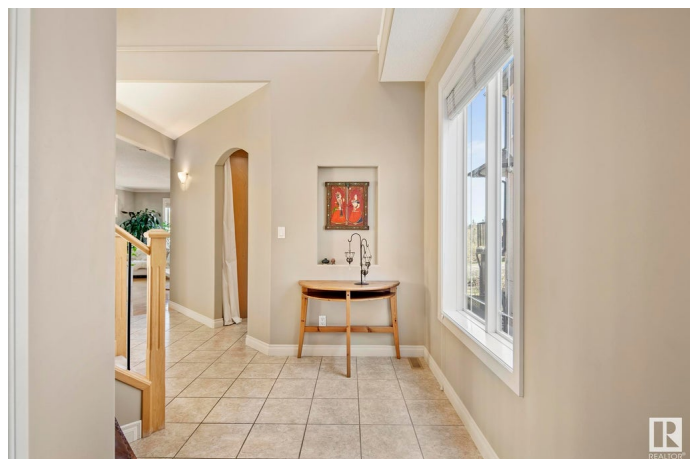
Single Family on 0.00 Acres

Mission (St. Albert), St. Albert, AB

INCREDIBLE home fronting the STURGEON RIVER with a WALKOUT LEGAL BASEMENT SUITE! Located in St. Albert's most charming community of Mission, this truly rare home has been exceptionally well cared for. As you step inside, you're welcomed by a GRAND OPEN-TO-ABOVE ENTRANCE leading to a massive kitchen with GAS STOVE, GRANITE COUNTERTOPS, and CEILING-HEIGHT CABINETS. The spacious living and dining areas are bathed in natural light from the many large windows. A stunning SOUTHEAST-FACING BALCONY offers breathtaking river views—perfect for morning coffee or relaxing in the sun. Upstairs you'll find a bonus room, a MASSIVE PRIMARY BEDROOM with vaulted ceilings, a GAS FIREPLACE, 5PC ENSUITE with DUAL SINKS and JETTED TUB, and a WALK-IN CLOSET. Two more bedrooms and a 4PC BATH complete the upper level. The WALKOUT BASEMENT SUITE features a full kitchen and separate laundry. Includes a HEATED OVERSIZED GARAGE. Steps to RED WILLOW TRAILS, a boat launch, a short walk to downtown and the St. Albert Farmers Market!

Built in 2005

Essential Information



MLS® #	E4435315
Price	\$799,000
Bedrooms	5
Bathrooms	3.50
Full Baths	3
Half Baths	1
Square Footage	2,725
Acres	0.00
Year Built	2005
Type	Single Family
Sub-Type	Detached Single Family
Style	2 Storey
Status	Active

Community Information

Address	19 Mission Avenue
Area	St. Albert
Subdivision	Mission (St. Albert)
City	St. Albert
County	ALBERTA
Province	AB
Postal Code	T8N 1H6

Amenities

Amenities	Exterior Walls- 2"x6", Hot Water Natural Gas, No Animal Home, No Smoking Home, Parking-Extra, Walkout Basement, Natural Gas BBQ Hookup
Parking Spaces	4
Parking	Double Garage Attached

Interior

Interior Features	ensuite bathroom
Appliances	Dryer, Garage Control, Garage Opener, Oven-Microwave, Stacked Washer/Dryer, Stove-Electric, Stove-Gas, Washer, Refrigerators-Two, Dishwasher-Two
Heating	Forced Air-1, In Floor Heat System, Natural Gas
Fireplace	Yes
Fireplaces	Corner, Mantel, Tile Surround
Stories	3

Has Suite	Yes
Has Basement	Yes
Basement	Full, Finished

Exterior

Exterior	Wood, Stone, Stucco
Exterior Features	Back Lane, Backs Onto Park/Trees, Playground Nearby, Ravine View, River View, Schools, Shopping Nearby
Roof	Asphalt Shingles
Construction	Wood, Stone, Stucco
Foundation	Concrete Perimeter

School Information

Elementary	Ronald Harvey, B.K
Middle	WD Cuts, VJM
High	Bellerose, SACHS

Additional Information

Date Listed	May 8th, 2025
Days on Market	16
Zoning	Zone 24

DATA IS DEEMED RELIABLE BUT IS NOT GUARANTEED ACCURATE BY THE REALTORS® ASSOCIATION OF EDMONTON. COPYRIGHT 2025 BY THE REALTORS® ASSOCIATION OF EDMONTON. ALL RIGHTS RESERVED. Trademarks are owned or controlled by the Canadian Real Estate Association (CREA) and identify real estate professionals who are members of CREA (REALTOR®, REALTORS®) and/or the quality of services they provide (MLS®, Multiple Listing Service®)

Listing information last updated on May 23rd, 2025 at 10:02pm MDT