

\$544,900 - 73 Penn Place, Spruce Grove

MLS® #E4436401

\$544,900

3 Bedroom, 2.50 Bathroom, 1,997 sqft

Single Family on 0.00 Acres

Prescott, Spruce Grove, AB

Award Winning Crystal Creek Homes. Discover this stunning 2-storey detached home in the sought-after Prescott community of Spruce Grove! Step inside to an open-concept design featuring a mudroom, half bath, enclosed den, and a spacious living room with a cozy fireplace. The modern kitchen, complete with a pantry, island, and dining area, is perfect for entertaining. Upstairs, unwind in the large bonus room, enjoy the walk-in laundry, and explore the 3 generously sized bedrooms. The luxurious primary suite boasts a huge walk-in closet and private ensuite with double sinks. Additional highlights include a \$5K appliance credit, quartz countertops, a separate side entrance to the basement, a double attached garage and upgraded laminate flooring on main. Situated in a family-friendly neighborhood with beautiful landscaping and nearby parks, this home combines elegance and functionality. Donâ€™t miss your chance to own this masterpiece by Crystal Creek Homes!

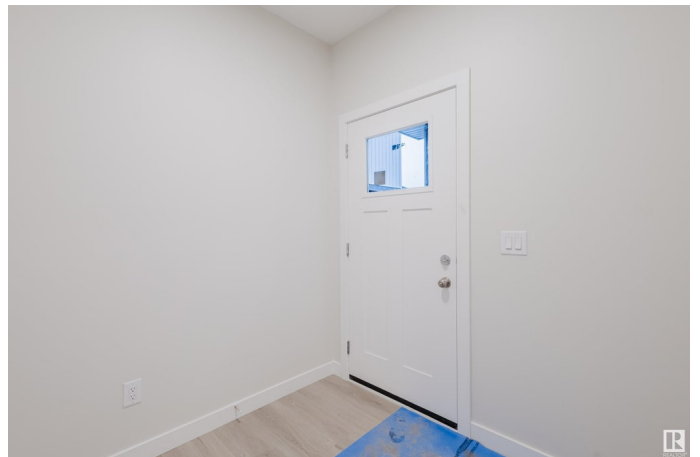
Built in 2024

Essential Information

MLS® # E4436401

Price \$544,900

Bedrooms 3



Bathrooms	2.50
Full Baths	2
Half Baths	1
Square Footage	1,997
Acres	0.00
Year Built	2024
Type	Single Family
Sub-Type	Detached Single Family
Style	2 Storey
Status	Active

Community Information

Address	73 Penn Place
Area	Spruce Grove
Subdivision	Prescott
City	Spruce Grove
County	ALBERTA
Province	AB
Postal Code	T7X 2W7

Amenities

Amenities	Ceiling 9 ft., Vinyl Windows, See Remarks
Parking	Double Garage Attached

Interior

Interior Features	ensuite bathroom
Appliances	Garage Control, Garage Opener, See Remarks
Heating	Forced Air-1, Natural Gas
Fireplace	Yes
Fireplaces	Insert
Stories	2
Has Basement	Yes
Basement	Full, Unfinished

Exterior

Exterior	Wood, Stone, Vinyl
Exterior Features	Park/Reserve, Schools, Stream/Pond, See Remarks
Roof	Asphalt Shingles
Construction	Wood, Stone, Vinyl

Foundation Concrete Perimeter

School Information

Elementary Prescott Learning Centre
Middle Prescott Learning Centre

Additional Information

Date Listed May 13th, 2025
Days on Market 10
Zoning Zone 91

DATA IS DEEMED RELIABLE BUT IS NOT GUARANTEED ACCURATE BY THE REALTORS® ASSOCIATION OF EDMONTON. COPYRIGHT 2025 BY THE REALTORS® ASSOCIATION OF EDMONTON. ALL RIGHTS RESERVED.Trademarks are owned or controlled by the Canadian Real Estate Association (CREA) and identify real estate professionals who are members of CREA (REALTOR®, REALTORS®) and/or the quality of services they provide (MLS®, Multiple Listing Service®)
Listing information last updated on May 23rd, 2025 at 4:17am MDT