

\$200,000 - 104 10611 117 Street, Edmonton

MLS® #E4436553

\$200,000

2 Bedroom, 2.00 Bathroom, 858 sqft

Condo / Townhouse on 0.00 Acres

Queen Mary Park, Edmonton, AB

Former SHOWSUITE condo just steps away from Edmonton's Brewery District! The front entryway has ceramic tile flooring & leads to a spacious primary bedroom, w/ a massive walk-in closet & a spa-like 3-piece ensuite w/ a tile-surround shower & quartz counters. The 2nd bedroom is located on the opposite side of the unitâ€™s ideal for roommatesâ€™ & is conveniently situated next to another full bathroom. The open-concept living space is filled w/ natural light from the large windows along the back & side of the unit. The kitchen offers upgraded appliances, under-cabinet lighting, tile backsplash, & quartz countertops. The glass door opens to your own large patio (7.5mx2.1m), perfect for entertaining & offering easy outdoor accessâ€™ great for letting your dog out! Just steps from the Brewery District, which features gyms, restaurants, grocery stores, & more. Additional features: in-suite laundry, 9ft ceilings, underground parking & MORE! For more details please visit the REALTORâ€™s Website

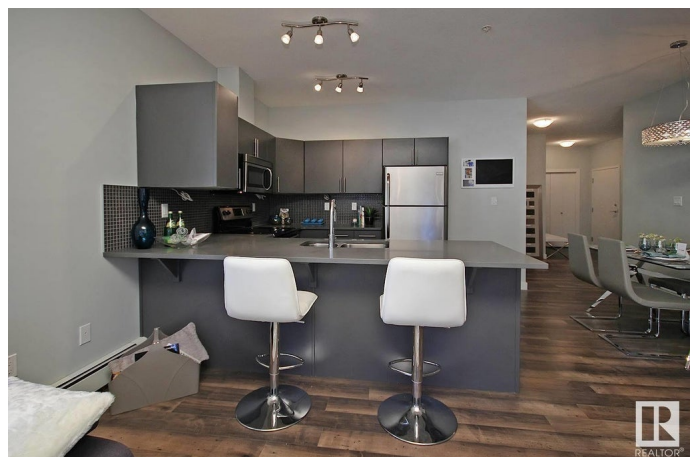
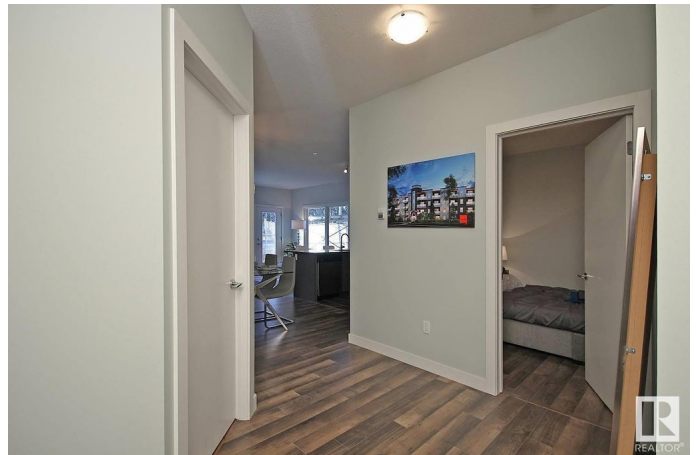
Built in 2013

Essential Information

MLS® # E4436553

Price \$200,000

Bedrooms 2



Bathrooms	2.00
Full Baths	2
Square Footage	858
Acres	0.00
Year Built	2013
Type	Condo / Townhouse
Sub-Type	Lowrise Apartment
Style	Single Level Apartment
Status	Active

Community Information

Address	104 10611 117 Street
Area	Edmonton
Subdivision	Queen Mary Park
City	Edmonton
County	ALBERTA
Province	AB
Postal Code	T5H 0G6

Amenities

Amenities	On Street Parking, Ceiling 9 ft., Parking-Visitor, Patio, Security Door, Storage-In-Suite, Vinyl Windows
Parking	Heated, Underground

Interior

Interior Features	ensuite bathroom
Appliances	Dishwasher-Built-In, Microwave Hood Fan, Refrigerator, Stacked Washer/Dryer, Stove-Electric, Window Coverings
Heating	Forced Air-1, Natural Gas
# of Stories	4
Stories	1
Has Basement	Yes
Basement	None, No Basement

Exterior

Exterior	Wood, Fiber Cement, Metal
Exterior Features	Playground Nearby, Public Swimming Pool, Public Transportation, Schools, Shopping Nearby
Roof	Roll Roofing

Construction	Wood, Fiber Cement, Metal
Foundation	Concrete Perimeter

School Information

Elementary	John A. McDougall/St. Cath
Middle	Spruce Avenue/St. Catherin
High	Victoria School/St. Joseph

Additional Information

Date Listed	May 14th, 2025
Days on Market	3
Zoning	Zone 08
Condo Fee	\$528

DATA IS DEEMED RELIABLE BUT IS NOT GUARANTEED ACCURATE BY THE REALTORS® ASSOCIATION OF EDMONTON. COPYRIGHT 2025 BY THE REALTORS® ASSOCIATION OF EDMONTON. ALL RIGHTS RESERVED.Trademarks are owned or controlled by the Canadian Real Estate Association (CREA) and identify real estate professionals who are members of CREA (REALTOR®, REALTORS®) and/or the quality of services they provide (MLS®, Multiple Listing Service®)

Listing information last updated on May 17th, 2025 at 12:17pm MDT