

## \$525,000 - 15 Lamplight Drive, Spruce Grove

MLS® #E4437987

**\$525,000**

5 Bedroom, 3.00 Bathroom, 1,605 sqft

Single Family on 0.00 Acres

Legacy Park, Spruce Grove, AB

Welcome to this beautifully kept bi-level home in Legacy Park, offering you the perfect mix of space, style, and an unbeatable location! Featuring FIVE bedrooms (including a top-floor owner's suite complete with a walk-in closet and 4pc ensuite), this home is designed to meet the needs of a growing family. The open-concept main floor showcases hardwood flooring, a cozy electric fireplace in the living room, and a well-appointed kitchen with center island, under-cabinet lighting, corner pantry, & separate dinette. Downstairs, you'll find a fully finished basement with 9' ceilings, a gas fireplace in the family room, and plenty of room to relax or entertain. Additional highlights here include central A/C, a heated double-attached garage, and a MASSIVE 2-tiered deck with built-in enclosures overlooking a desirable WEST-FACING backyard, offering you the utmost in privacy. Located within walking distance to public transit, the Tri-Leisure Centre, shopping, and other amenities – this home truly has it all!

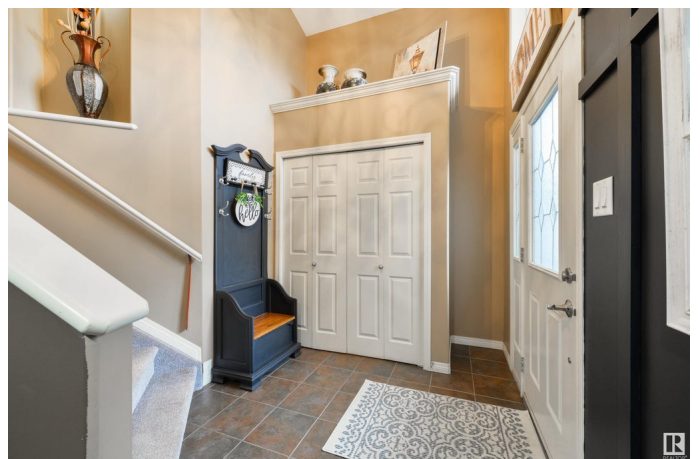
Built in 2006

### Essential Information

MLS® # E4437987

Price \$525,000

Bedrooms 5



Bathrooms	3.00
Full Baths	3
Square Footage	1,605
Acres	0.00
Year Built	2006
Type	Single Family
Sub-Type	Detached Single Family
Style	Bi-Level
Status	Active

### **Community Information**

Address	15 Lamplight Drive
Area	Spruce Grove
Subdivision	Legacy Park
City	Spruce Grove
County	ALBERTA
Province	AB
Postal Code	T7X 4N1

### **Amenities**

Amenities	Air Conditioner, Ceiling 9 ft., Deck, Gazebo, No Animal Home, Vaulted Ceiling, See Remarks, 9 ft. Basement Ceiling
Parking	Double Garage Attached, Heated

### **Interior**

Interior Features	ensuite bathroom
Appliances	Dishwasher-Built-In, Dryer, Garage Control, Garage Opener, Microwave Hood Fan, Refrigerator, Storage Shed, Stove-Electric, Washer, Window Coverings
Heating	Forced Air-1, Natural Gas
Fireplace	Yes
Fireplaces	See Remarks
Stories	3
Has Basement	Yes
Basement	Full, Finished

### **Exterior**

Exterior	Wood, Stone, Vinyl
Exterior Features	Fenced, Flat Site, Landscaped, Playground Nearby, Private Setting,

Public Transportation, Schools, Shopping Nearby, See Remarks

Roof	Asphalt Shingles
Construction	Wood, Stone, Vinyl
Foundation	Concrete Perimeter

### Additional Information

Date Listed	May 22nd, 2025
Days on Market	6
Zoning	Zone 91

DATA IS DEEMED RELIABLE BUT IS NOT GUARANTEED ACCURATE BY THE REALTORS® ASSOCIATION OF EDMONTON. COPYRIGHT 2025 BY THE REALTORS® ASSOCIATION OF EDMONTON. ALL RIGHTS RESERVED. Trademarks are owned or controlled by the Canadian Real Estate Association (CREA) and identify real estate professionals who are members of CREA (REALTOR®, REALTORS®) and/or the quality of services they provide (MLS®, Multiple Listing Service®)

Listing information last updated on May 28th, 2025 at 4:32pm MDT