

\$450,000 - 8 Bethel Drive, Sherwood Park

MLS® #E4440654

\$450,000

3 Bedroom, 3.00 Bathroom, 1,334 sqft

Single Family on 0.00 Acres

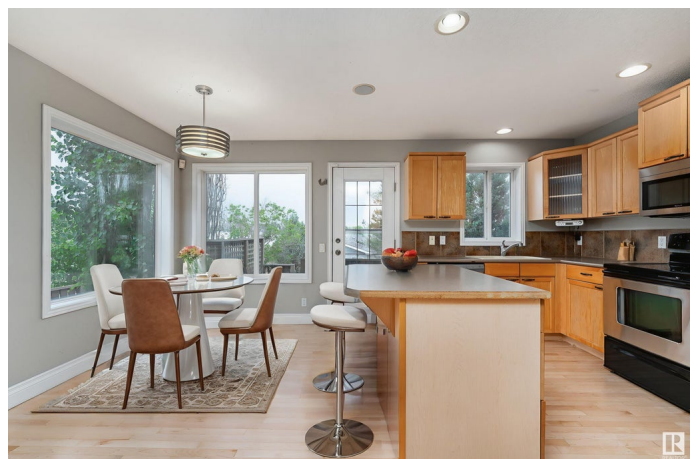
Strathcona Village, Sherwood Park, AB

This lovely home is in a quiet, family-friendly neighbourhood and offers the perfect blend of comfort and space and has lots of potential. Ideally located, it's just a short walk to Baseline Road where you'll find grocery stores, restaurants, gyms, and shops—all amenities are close by. You'll also be close proximity to schools, parks, and many places to enjoy the outdoors. This home is a great fit for families, first-time buyers, or investors. Whether you're starting out, downsizing, or looking to grow your real estate portfolio, this home gives you options. Don't miss your chance to own a solid home in one of Sherwood Park's most popular areas. *Some photos have been virtually staged*

Built in 2000

Essential Information

MLS® #	E4440654
Price	\$450,000
Bedrooms	3
Bathrooms	3.00
Full Baths	2
Half Baths	2
Square Footage	1,334
Acres	0.00



Year Built	2000
Type	Single Family
Sub-Type	Detached Single Family
Style	2 Storey
Status	Active

Community Information

Address	8 Bethel Drive
Area	Sherwood Park
Subdivision	Strathcona Village
City	Sherwood Park
County	ALBERTA
Province	AB
Postal Code	T8H 2G1

Amenities

Amenities	On Street Parking, Deck, Fire Pit, Front Porch, Hot Tub, Hot Water Natural Gas, No Smoking Home, Vinyl Windows, See Remarks
Parking	Double Garage Detached, Over Sized

Interior

Interior Features	ensuite bathroom
Appliances	Dishwasher-Built-In, Dryer, Microwave Hood Fan, Refrigerator, Stove-Electric, Washer
Heating	Forced Air-1, Natural Gas
Stories	3
Has Basement	Yes
Basement	Full, Finished

Exterior

Exterior	Wood, Vinyl
Exterior Features	Fenced, Fruit Trees/Shrubs, Landscaped
Roof	Asphalt Shingles
Construction	Wood, Vinyl
Foundation	Concrete Perimeter

Additional Information

Date Listed	June 5th, 2025
Days on Market	7

Zoning

Zone 25

DATA IS DEEMED RELIABLE BUT IS NOT GUARANTEED ACCURATE BY THE REALTORS® ASSOCIATION OF EDMONTON. COPYRIGHT 2025 BY THE REALTORS® ASSOCIATION OF EDMONTON. ALL RIGHTS RESERVED. Trademarks are owned or controlled by the Canadian Real Estate Association (CREA) and identify real estate professionals who are members of CREA (REALTOR®, REALTORS®) and/or the quality of services they provide (MLS®, Multiple Listing Service®)

Listing information last updated on June 11th, 2025 at 9:32pm MDT