

## \$259,000 - 201 10003 87 Avenue, Edmonton

MLS® #E4443277

**\$259,000**

2 Bedroom, 1.00 Bathroom, 846 sqft

Condo / Townhouse on 0.00 Acres

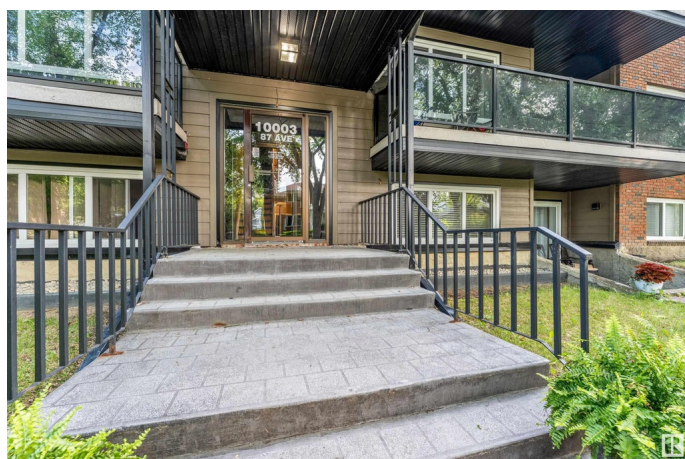
Strathcona, Edmonton, AB

FANTASTIC LOCATION! Welcome to Strathcona, one of Edmonton's most dynamic and sought-after neighborhoods. This stylishly updated upper-level condo offers 2 bedrooms and 1 bathroom and is completely move-in ready. Featuring hardwood floors, granite countertops, and custom raised kitchen cabinets, the open-concept layout is bright and functional. The kitchen is equipped with stainless steel appliances and opens onto a spacious living area with access to a large balcony—ideal for entertaining or unwinding. The primary bedroom and large windows fill the home with natural light. Just a short walk to Whyte Avenue's vibrant restaurants, cafes, boutiques, and nightlife, and only minutes from downtown, the river valley, Mill Creek Ravine, schools, and transit. Whether you're a first-time homebuyer, investor, or looking to downsize, this is a prime opportunity in an unbeatable location. Immediate possession available.

Built in 1981

### Essential Information

MLS® #	E4443277
Price	\$259,000
Bedrooms	2
Bathrooms	1.00



Full Baths	1
Square Footage	846
Acres	0.00
Year Built	1981
Type	Condo / Townhouse
Sub-Type	Lowrise Apartment
Style	Single Level Apartment
Status	Active

### Community Information

Address	201 10003 87 Avenue
Area	Edmonton
Subdivision	Strathcona
City	Edmonton
County	ALBERTA
Province	AB
Postal Code	T6P 2P1

### Amenities

Amenities	On Street Parking, Intercom, Security Door
Parking	Stall

### Interior

Appliances	Dishwasher-Built-In, Euro Washer/Dryer Combo, Microwave Hood Fan, Refrigerator, Stove-Countertop Electric, Window Coverings
Heating	Hot Water, Natural Gas
# of Stories	4
Stories	4
Has Basement	Yes
Basement	See Remarks

### Exterior

Exterior	Wood, Brick, Stucco
Exterior Features	Back Lane, Playground Nearby, Public Transportation, Schools, Shopping Nearby
Roof	Unknown
Construction	Wood, Brick, Stucco
Foundation	See Remarks

### School Information

Elementary	King Edward School
Middle	Allendale School
High	Strathcona School

### **Additional Information**

Date Listed	June 19th, 2025
Days on Market	83
Zoning	Zone 15
Condo Fee	\$542

DATA IS DEEMED RELIABLE BUT IS NOT GUARANTEED ACCURATE BY THE REALTORS® ASSOCIATION OF EDMONTON. COPYRIGHT 2025 BY THE REALTORS® ASSOCIATION OF EDMONTON. ALL RIGHTS RESERVED. Trademarks are owned or controlled by the Canadian Real Estate Association (CREA) and identify real estate professionals who are members of CREA (REALTOR®, REALTORS®) and/or the quality of services they provide (MLS®, Multiple Listing Service®)

Listing information last updated on September 10th, 2025 at 4:47am MDT