

\$193,000 - 11 150 Edwards Drive, Edmonton

MLS® #E4446134

\$193,000

2 Bedroom, 1.00 Bathroom, 699 sqft

Condo / Townhouse on 0.00 Acres

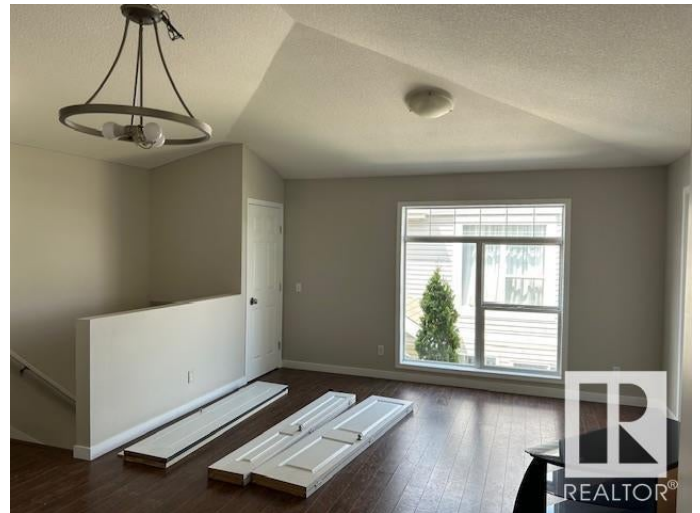
Ellerslie, Edmonton, AB

Freshly painted 2 bedroom Top Floor Carriage Home ! California knock down vaulted ceilings. High- end laminate flooring in this open style kitchen/living room including the stairs to your new living space. This home has 2 spacious bedrooms both with walk-in closets. The 4pce. bathroom is over-sized, great for plenty of room for your morning rituals. This condo has in-suite laundry and storage. The heat is in floor heating so no unsightly pipes running along the walls getting in the way of your decorating plans. Renovations include paint, baseboards and some interior doors. Beautiful balcony for enjoying a nice BBQ when you desire to do so. Your parking stall is just 10 feet from your door rather than 100 feet. Condo fee includes water, sewer, heat and exterior maintenance. A Great Price in a Fantastic Location , A Must See!!!

Built in 2005

Essential Information

MLS® #	E4446134
Price	\$193,000
Bedrooms	2
Bathrooms	1.00
Full Baths	1
Square Footage	699



Acres	0.00
Year Built	2005
Type	Condo / Townhouse
Sub-Type	Carriage
Style	Bungalow
Status	Active

Community Information

Address	11 150 Edwards Drive
Area	Edmonton
Subdivision	Ellerslie
City	Edmonton
County	ALBERTA
Province	AB
Postal Code	T6X 1M4

Amenities

Amenities	Detectors Smoke, Parking-Visitor, Vaulted Ceiling
Parking	Stall

Interior

Appliances	Dishwasher-Built-In, Euro Washer/Dryer Combo, Hood Fan, Refrigerator, Stove-Electric
Heating	In Floor Heat System, Water
Stories	2
Has Basement	Yes
Basement	None, No Basement

Exterior

Exterior	Wood, Stone, Vinyl
Exterior Features	Fenced, Flat Site, Landscaped, Playground Nearby, Public Transportation, Schools
Roof	Asphalt Shingles
Construction	Wood, Stone, Vinyl
Foundation	Concrete Perimeter

Additional Information

Date Listed	July 5th, 2025
Days on Market	6

Zoning	Zone 53
Condo Fee	\$399

DATA IS DEEMED RELIABLE BUT IS NOT GUARANTEED ACCURATE BY THE REALTORS® ASSOCIATION OF EDMONTON. COPYRIGHT 2025 BY THE REALTORS® ASSOCIATION OF EDMONTON. ALL RIGHTS RESERVED. Trademarks are owned or controlled by the Canadian Real Estate Association (CREA) and identify real estate professionals who are members of CREA (REALTOR®, REALTORS®) and/or the quality of services they provide (MLS®, Multiple Listing Service®)

Listing information last updated on July 11th, 2025 at 6:02pm MDT