

\$215,000 - 1106 8315 105 Street, Edmonton

MLS® #E4446227

\$215,000

1 Bedroom, 1.00 Bathroom, 717 sqft

Condo / Townhouse on 0.00 Acres

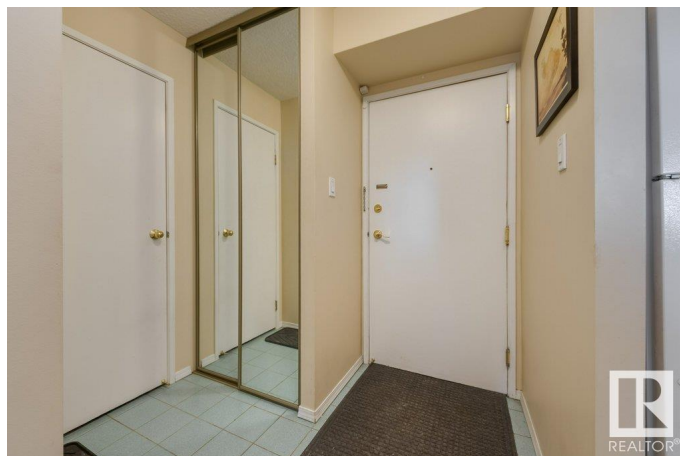
Strathcona, Edmonton, AB

Welcome to Heritage House in beautiful Strathcona! All utilities included in this 1 bed/1 bath 11th floor condo with underground parking and stunning panoramic downtown views. This property is close to the University, Whyte Avenue, shopping, schools, parks, downtown, walking trails, public transportation- perfect for students and those wanting an urban lifestyle. Full of natural light, the condo features a spacious open concept living room/ dining room, functional galley kitchen w/ dishwasher and garburator, large bright bedroom and 4 pc bath. Other features include a huge north facing balcony, in-suite storage, laundry room on each building floor, rooftop deck with BBQ area, exercise space, and 1 stall- underground parking.

Built in 1969

Essential Information

| | |
|----------------|-----------|
| MLS® # | E4446227 |
| Price | \$215,000 |
| Bedrooms | 1 |
| Bathrooms | 1.00 |
| Full Baths | 1 |
| Square Footage | 717 |
| Acres | 0.00 |
| Year Built | 1969 |



| | |
|----------|------------------------|
| Type | Condo / Townhouse |
| Sub-Type | Apartment High Rise |
| Style | Single Level Apartment |
| Status | Active |

Community Information

| | |
|-------------|----------------------|
| Address | 1106 8315 105 Street |
| Area | Edmonton |
| Subdivision | Strathcona |
| City | Edmonton |
| County | ALBERTA |
| Province | AB |
| Postal Code | T6E 4H4 |

Amenities

| | |
|----------------|---|
| Amenities | On Street Parking, Exercise Room, Parking-Visitor, Recreation Room/Centre |
| Parking Spaces | 1 |
| Parking | Underground |

Interior

| | |
|--------------|---|
| Appliances | Dishwasher-Built-In, Garburator, Hood Fan, Refrigerator, Stove-Electric |
| Heating | Forced Air-1, Natural Gas |
| # of Stories | 14 |
| Stories | 1 |
| Has Basement | Yes |
| Basement | None, No Basement |

Exterior

| | |
|-------------------|--|
| Exterior | Concrete |
| Exterior Features | Public Transportation, Shopping Nearby, View City, View Downtown |
| Roof | Roll Roofing |
| Construction | Concrete |
| Foundation | Concrete Perimeter |

Additional Information

| | |
|----------------|----------------|
| Date Listed | July 5th, 2025 |
| Days on Market | 12 |
| Zoning | Zone 15 |

Condo Fee \$479

DATA IS DEEMED RELIABLE BUT IS NOT GUARANTEED ACCURATE BY THE REALTORS® ASSOCIATION OF EDMONTON. COPYRIGHT 2025 BY THE REALTORS® ASSOCIATION OF EDMONTON. ALL RIGHTS RESERVED.Trademarks are owned or controlled by the Canadian Real Estate Association (CREA) and identify real estate professionals who are members of CREA (REALTOR®, REALTORS®) and/or the quality of services they provide (MLS®, Multiple Listing Service®)
Listing information last updated on July 17th, 2025 at 3:47am MDT