

Courtesy Of Christina A Reid Of Century 21 Leading

\$589,900 - 6112 Carr Road, Edmonton

MLS® #E4449798

\$589,900

3 Bedroom, 2.50 Bathroom, 1,656 sqft

Single Family on 0.00 Acres

Griesbach, Edmonton, AB

Discover the Valley â€” a beautifully designed home that offers the perfect balance of space and style. Featuring side entry, 3 comfortable bedrooms, 2.5 bathrooms, and an open-concept layout, this home is ideal for both family living and entertaining. Upstairs, enjoy the convenience of second-floor laundry and a versatile bonus room thatâ€™s perfect for relaxing or gathering with loved ones. The Valley-G is where modern design meets everyday comfort, creating a welcoming space you'll love to come home to.



Built in 2025

Essential Information

| | |
|----------------|------------------------|
| MLS® # | E4449798 |
| Price | \$589,900 |
| Bedrooms | 3 |
| Bathrooms | 2.50 |
| Full Baths | 2 |
| Half Baths | 1 |
| Square Footage | 1,656 |
| Acres | 0.00 |
| Year Built | 2025 |
| Type | Single Family |
| Sub-Type | Detached Single Family |
| Style | 2 Storey |
| Status | Active |

Community Information

Address 6112 Carr Road
Area Edmonton
Subdivision Griesbach
City Edmonton
County ALBERTA
Province AB
Postal Code T5E 6Y4

Amenities

Amenities Carbon Monoxide Detector
Tankless, Smart/Program. Th
Parking Double Garage Detached

Interior

Interior Features ensuite bathroom
Appliances Dishwasher-Built-In, Garage
Stacked Washer/Dryer, Stove
Heating Forced Air-1, Natural Gas
Fireplace Yes
Fireplaces Insert
Stories 2
Has Basement Yes
Basement Full, Unfinished

Exterior

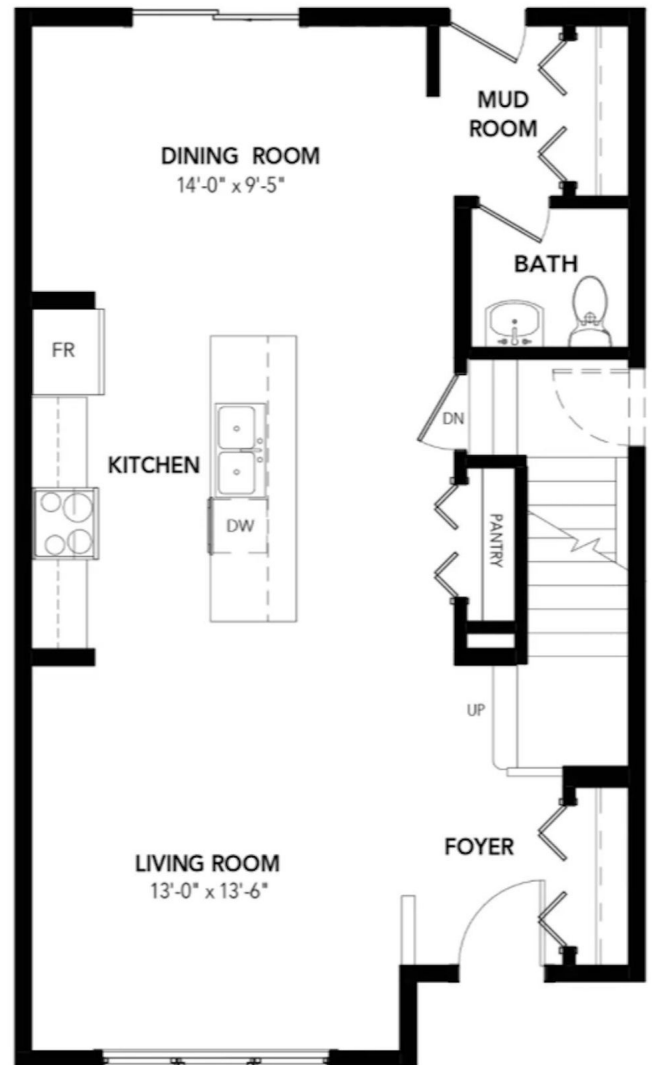
Exterior Prefab, Vinyl
Exterior Features Back Lane, Fenced, Golf Nearby, Landscaped, Playground Nearby,
Public Transportation, Schools, Shopping Nearby
Roof Asphalt Shingles
Construction Prefab, Vinyl
Foundation Concrete Perimeter

School Information

Elementary MAJOR-GENERAL GRIESBACH
Middle St. Edmund
High QUEEN ELIZABETH

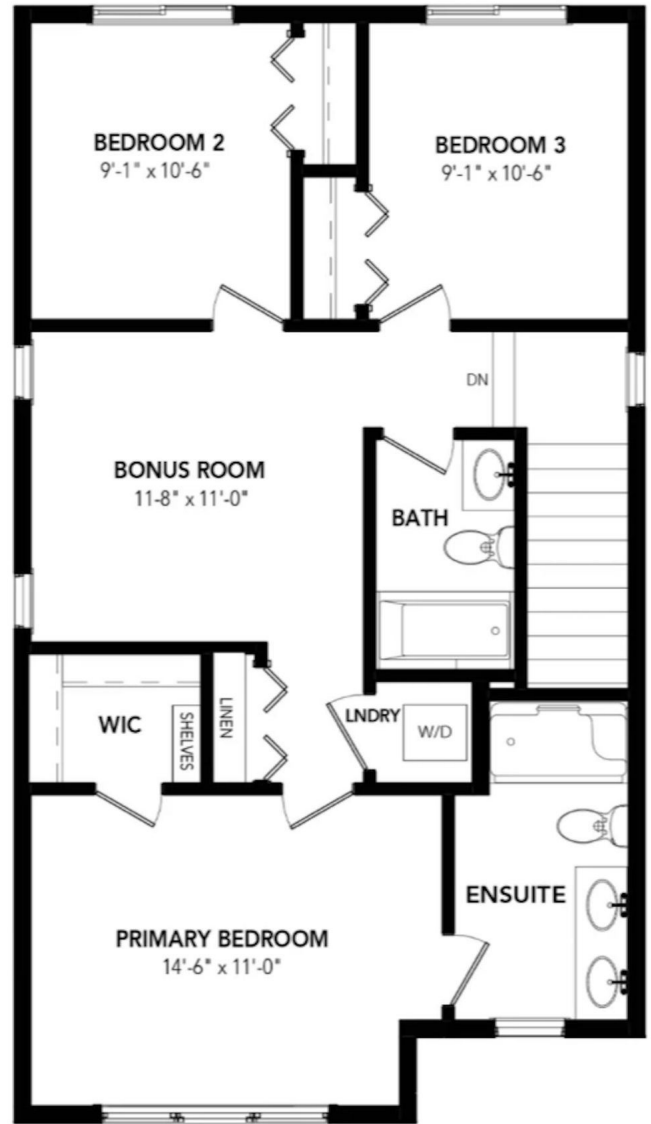
Additional Information

Date Listed July 23rd, 2025



Days on Market 121

Zoning Zone 27



DATA IS DEEMED RELIABLE BUT IS NOT GUARANTEED ACCURATE BY THE REALTORS[®] ASSOCIATION OF EDMONTON. COPYRIGHT 2025 BY THE REALTORS[®] ASSOCIATION OF EDMONTON. ALL RIGHTS RESERVED. Trademarks are owned or controlled by the Canadian Real Estate Association (CREA) and identify real estate professionals who are members of CREA (REALTOR[®], REALTORS[®]) and/or the quality of services they provide (MLS[®], Multiple Listing Service[®])

Listing information last updated on November 20th, 2025 at 10:32pm MST