

\$249,900 - 201 111 Watt Common, Edmonton

MLS® #E4461815

\$249,900

2 Bedroom, 2.00 Bathroom, 969 sqft
Condo / Townhouse on 0.00 Acres

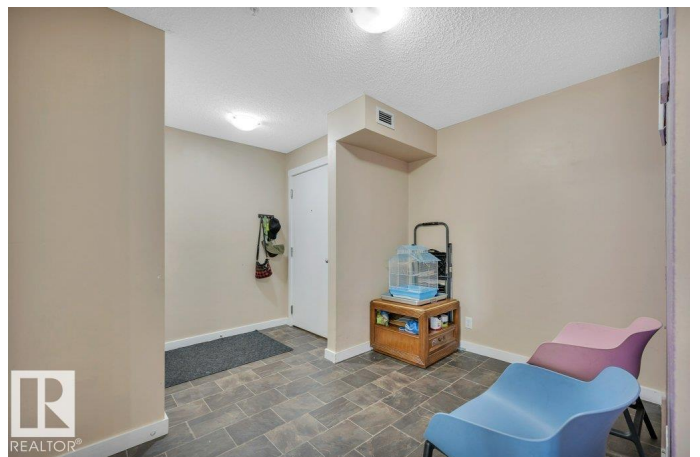
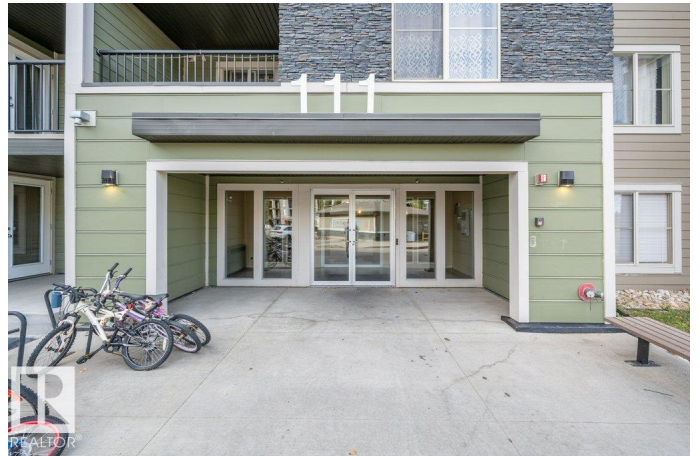
Walker, Edmonton, AB

Welcome to Walker Lake Gate. This expansive 2 bedroom , 2 bath condo features a great location, close to shopping and commuting routes such as 50 st, ellerslie road and the Henday! This original owner corner unit shows pride of ownership throughout, with newer flooring and paint, granite countertops and more. Entering this home we have a good sized entrance way, with a great area for a home office or reading nook. Open concept floor plan features a fully appointed kitchen, large dining area and a living room. The master has a walk in closet and a 4 piece ensuite. The second bedroom is separate for privacy, and we have a 4 piece main bath. We also have a good sized laundry complete with extra storage. One of the largest units in the complex, comes with heated underground parking and a huge 5' x 15' storage room. Building is well managed, and condo fees cover heat and water, snow removal, reserve fund and professional management. Walker is a great area, there is also a walking trail close at hand. Welcome home

Built in 2014

Essential Information

MLS® #	E4461815
Price	\$249,900



Bedrooms	2
Bathrooms	2.00
Full Baths	2
Square Footage	969
Acres	0.00
Year Built	2014
Type	Condo / Townhouse
Sub-Type	Lowrise Apartment
Style	Single Level Apartment
Status	Active

Community Information

Address	201 111 Watt Common
Area	Edmonton
Subdivision	Walker
City	Edmonton
County	ALBERTA
Province	AB
Postal Code	T6X 2C6

Amenities

Amenities	Intercom, Parking-Visitor, Secured Parking, Vinyl Windows, Storage Cage, Natural Gas BBQ Hookup
Parking	Heated, Underground

Interior

Interior Features	ensuite bathroom
Appliances	Dishwasher-Built-In, Dryer, Microwave Hood Fan, Refrigerator, Stove-Electric, Washer
Heating	Baseboard, Natural Gas
# of Stories	4
Stories	1
Has Basement	Yes
Basement	None, No Basement

Exterior

Exterior	Wood, Vinyl
Exterior Features	Airport Nearby, Public Transportation
Roof	Asphalt Shingles

Construction	Wood, Vinyl
Foundation	Concrete Perimeter

School Information

Elementary	Shauna May Seneca k-9
Middle	Shauna May Seneca k-9
High	Dr Francis Whiskeyjack HS

Additional Information

Date Listed	October 10th, 2025
Days on Market	42
Zoning	Zone 53
Condo Fee	\$545

DATA IS DEEMED RELIABLE BUT IS NOT GUARANTEED ACCURATE BY THE REALTORS® ASSOCIATION OF EDMONTON. COPYRIGHT 2025 BY THE REALTORS® ASSOCIATION OF EDMONTON. ALL RIGHTS RESERVED. Trademarks are owned or controlled by the Canadian Real Estate Association (CREA) and identify real estate professionals who are members of CREA (REALTOR®, REALTORS®) and/or the quality of services they provide (MLS®, Multiple Listing Service®)

Listing information last updated on November 20th, 2025 at 10:32pm MST